



edue' sym
GYMNOVA

YOUNG CHILDREN CATALOGUE



The Educ'Gym range has been created especially for children practicing gymnastics in Baby-Gym.

The modular design of the components provides a wide range of advantages for teaching and learning and allows training sessions to be tailored to particular types of motor skills.

This equipment has been designed specifically to develop young children's motor skills and has evolved over time to incorporate new practices and new safety standards so that you can be the equipment you use is safe.

We now offer a complete range of products in attractive colours and in different shapes and sizes to suit each age group or learning situation.

And to make your gym sessions even more fun, we have made big colour changes for certain products. From now on fuchsia pink, lime green and turquoise will be brightening up your circuits.

We have also added new linking elements to the wooden range. These can be fitted quickly and easily to connect ladders to bases in diverse combinations.

And lastly, all the products in the Educ'Gym range are supplied with a phthalate-free PVC cover with class M2 fire rating to allow children to enjoy their favourite activities without risk.

Educ'Gym can also be used to create an infinite number of learning circuits by combining the foam module range with other components such as bases, mini-beams, ladders and mini-trampolines, etc. We also offer lightweight and soft mats as ideal accessories for our entire range of equipment to ensure all play areas feel safe and secure.

This catalogue presents a wide range of solutions.



Founded by 2 passionate gymnasts and coaches, the Educ'Gym brand was created in 1976 with the launch of a range of learning equipment developed specifically for gymnastics clubs.

GYMNOVA has been working with you for nearly 45 years.



MADE IN FRANCE

Most of GYMNOVA's Educ'Gym products are manufactured in France at the company's two production sites in Wattrelos (Nord department of France (59)) and Balmay (Ain department of France (01)). This 'Made in France' production ensures compliance with the applicable European and French environmental standards as well as the creation of local jobs. And to reduce our carbon footprint, more than a third of the raw materials used are sourced as close as possible to our production sites.



ENVIRONMENT

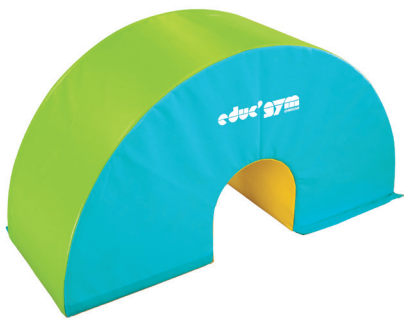
GYMNOVA has been committed to an environmental approach for many years and seeks to play a leading role in the ecological transition. We therefore choose sustainable materials such as steel and renewable resources such as wood. These 100% recyclable and infinitely recyclable raw materials retain all their properties and allow us to significantly reduce our environmental impact. Our production sites have also committed to this approach with ISO 14001 certification, enabling us to continuously improve our waste management, product logistics and use of resources.



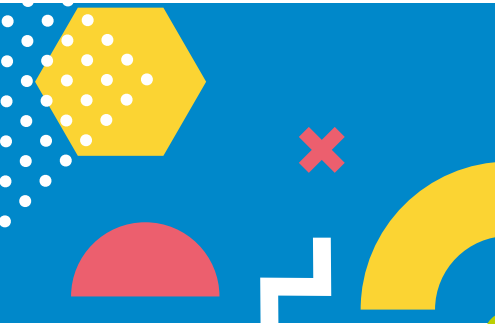
5-YEAR WARRANTY

Because we want you to buy with confidence, our entire Educ'Gym product range is covered by a 5-year warranty* for any material, design or manufacturing faults. Our new design and research & development methods enable us to achieve such a high level of reliability that we are able to offer this warranty on our full range of products.

* Except wearing parts (beds, springs, etc.). Refer to our General Terms and Conditions of Sale on our website: www.gymnova.com for further details.



Contents



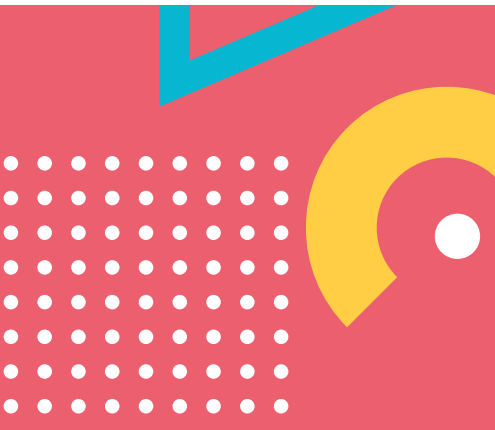
Foam modules

Small foam modules	6
Vario range	14
Learning modules & beams	17
Vaulting horses	18
Large foam modules	20
Adapted gymnastics	22
Multi-shape module & Gym'kub	24



Wooden range

Ladders	26
Bases and mini-bases	27
Plinths	27
Beams, benches, bars ...	28
Assembly guide	34

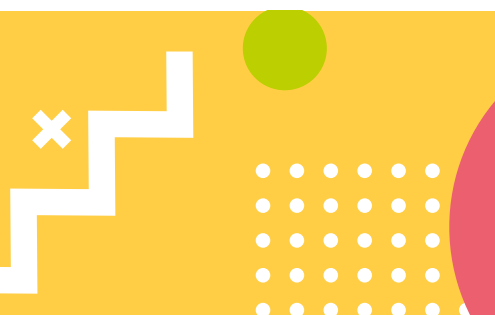


Mats

Gymnastics areas	36
Folding mats	36
Learning mats	37
Hut mat	38

Small educational equipment

Actiplot	39
Baby basket	39



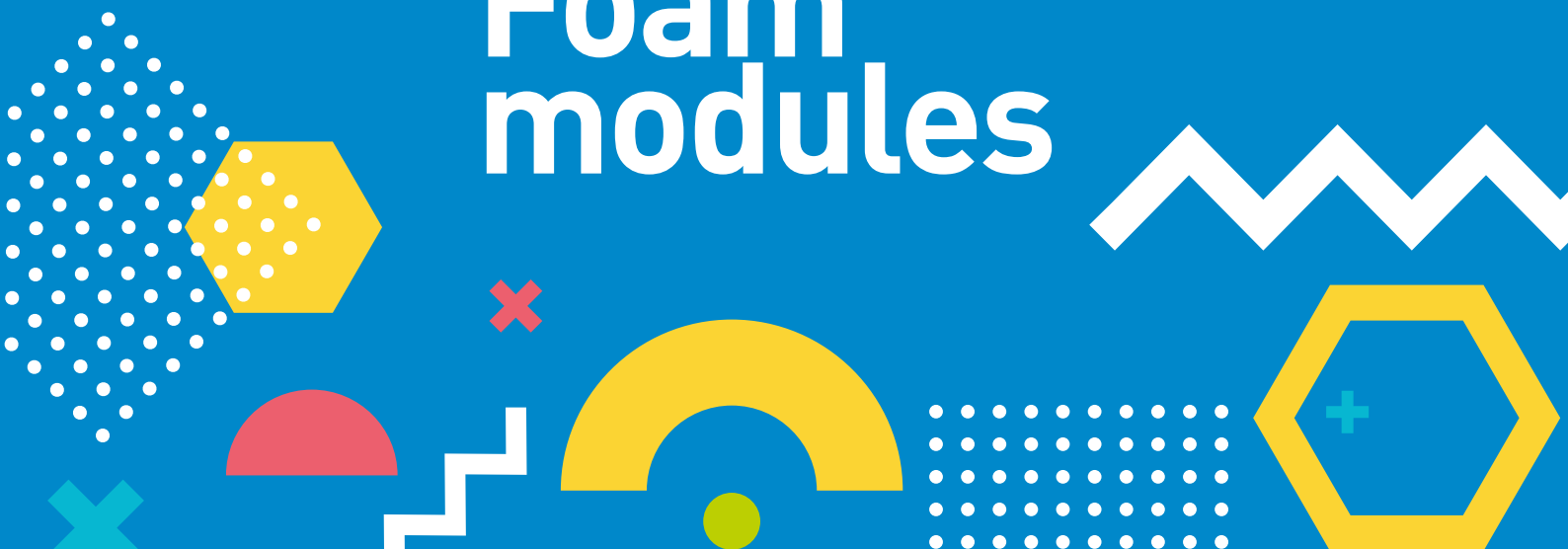
Trampolines & springboards

Trampolines	41
Springboards	41





Foam modules



Small foam modules



In a variety of shapes, and in some cases with hook-and-loop strips, these foam modules can be used to create various fun activities to develop young children's coordination and balance. Diverse configurations are possible in combination with other foam modules or components from the wooden range. Designed for children from 18 months to 6 years of age, they are made from polyurethane foam of different densities and are encased in a phthalate-free 1,000 denier PVC cover with M2 fire rating.



Ref. 0288



Ref. 0360



Ref. 0361

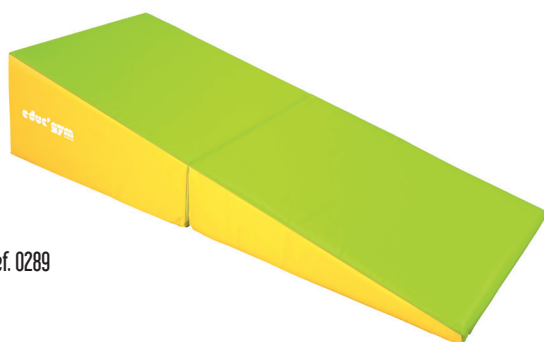


Ref. 0362

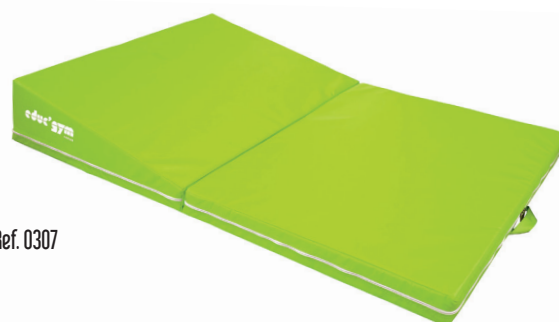
Wedge modules

These modules help children learn rolling exercises and experience the first sensations of speed associated with these movements. Ref. 0362 has a shallower incline enabling children to develop the technique in a gentle way.

REF.	DIMENSIONS (LxWxH)	WEIGHT (kg)	COLOURS	HANDLES
0288	100 x 70 x 48 cm	5	PINK and GREEN	1
0360	100 x 50 x 50 cm	4	BLUE and GREEN	1
0361	150 x 100 x 60 cm	13	GREEN and YELLOW	1
0362	200 x 100 x 35 cm	11	YELLOW and PINK	4



Ref. 0289



Ref. 0307

Folding wedge modules

Ideal for learning all kinds of rolls, these modules can be used in different ways thanks to their varied shapes. When folded, module Ref. 0289 converts into a rectangular block while module Ref. 0307 provides a gentler incline.

Folded dimensions:

Ref. 0289: 100 x 70 x 53 cm (LxWxH).

Ref. 0307: 100 x 120 x 40/20 cm (LxWxH).

REF.	DIMENSIONS (LxWxH)	WEIGHT (kg)	COLOURS	HANDLES
0289	200 x 70 x 48 cm	10	GREEN and YELLOW	-
0307	200 x 120 x 30/10 cm	12	GREEN	2

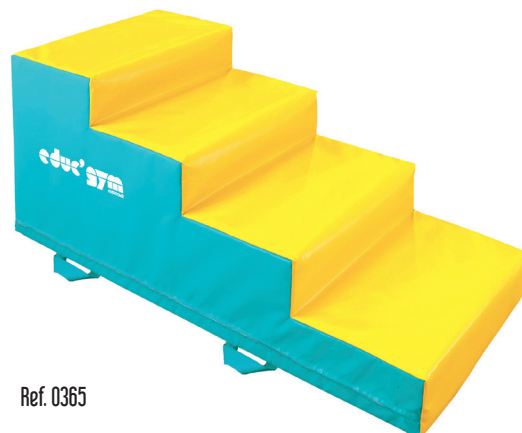
Small foam modules



Ref. 0296



Ref. 0297



Ref. 0365

Step modules

These modules replicate conventional steps. They teach young children how to go up and down steps and provide easy access to other modules or apparatus during learning workshops.

REF.	DIMENSIONS (LxWxH)	WEIGHT (kg)	NO. OF STEPS	COLOURS	HANDLES
0296	76 x 70 x 48/24 cm	6	2	GREEN and BLUE	-
0297	114 x 70 x 72/48/24 cm	9	3	BLUE and PINK	2
0365	150 x 60 x 60/45/30/15 cm	10	4	YELLOW and BLUE	4

Ref. 0332

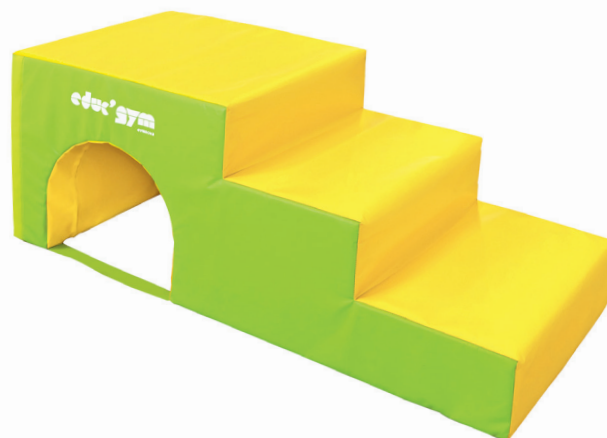
Vario' module

Its various shapes allow this module, which steps with a tunnel, to be used to work on numerous situations involving motor functions (crawling, jumping, etc.). In combination with a wedge module, it is suitable for all kinds of rolls and also converts into a slide.

Step height: 20 cm.

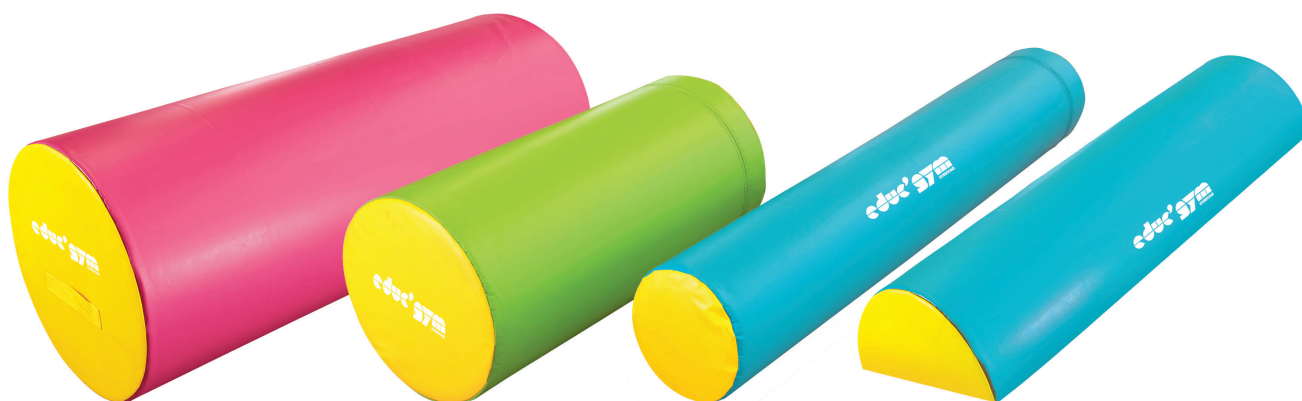
Dimensions: 160 x 60 x 60 cm (LxWxH).

Weight: 11 kg.





Colourful cylinders of different sizes are essential for learning situations. Whether to create obstacles, bridges or for an introduction to rolling exercises, they are ideal for designing situations to promote motor development.



Ref. 0366

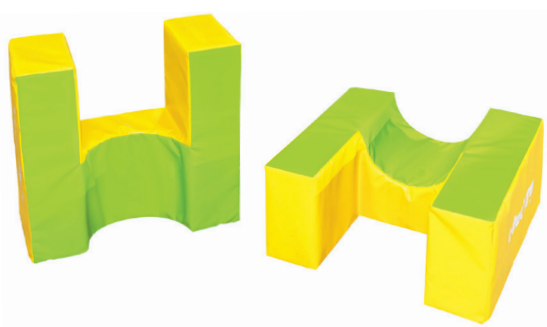
Ref. 0286

Ref. 0329

Ref. 0367

Cylinder modules

REF.	DIMENSIONS (LxØ)	WEIGHT (kg)	COLOURS	HANDLES
0286	100 x 46 cm	5	GREEN and YELLOW	-
0329	150 x 30 cm	4	BLUE and YELLOW	-
0366	150 x 60 cm	12	PINK and YELLOW	2
0367	150 x 60 x 30 cm	6	BLUE and YELLOW	-



Ref. 0334 Vario' support frames

These modules can be used on their own as obstacles or combined. Together with modules such as the beam (Ref. 0330) or the cylinder (Ref. 0329), they can be converted into a bridge to develop balance. Sold in sets of 2.

Colours: green and yellow.

Dimensions: 60 x 60 x 30 cm (LxWxH).



Ref. 0330 Vario' beam

Ideal for developing children's balance and coordination. Used on its own or in combination with Vario Support frames (Ref. 0334), it teaches young children how to walk on a narrow surface a few centimeters from the ground.

Colours: pink and yellow.

Dimensions: 150 x 30 x 30 cm (LxWxH).

Weight: 4 kg.

Small foam modules



Composition of the assembly shown:

REF.	DESCRIPTION	QTY
0336	VARIO' TUBES	1
0334	VARIO' SUPPORT FRAME	3
0331	VARIO' BRIDGE (PAGE 11)	1
0329	CYLINDER MODULE	1
0330	VARIO' BEAM	1
0287	RAISED WEDGE MODULE (PAGE 10)	1



Composition of the assembly shown:

REF.	DESCRIPTION	QTY
0369	RECTANGULAR BLOCK MODULE (PAGE 10)	1
0334	VARIO' SUPPORT FRAME	1
0330	VARIO' BEAM	1
0332	VARIO' SHAPE	1



Ref. 0290



Ref. 0293



Ref. 0369

Rectangular block modules

With their rectangular shape and different heights, these modules are ideal for introducing very young children to gymnastics and for performing those first jumping movements.

REF.	DIMENSIONS (LxWxH)	WEIGHT (kg)	COLOURS	HANDLES
0290	100 x 58 x 48 cm	7	BLUE AND YELLOW	-
0293	70 x 38 x 24 cm	1	GREEN AND YELLOW	-
0369	150 x 60 x 60 cm	15	PINK AND YELLOW	2



Ref. 0287



Ref. 0363

“Raised wedge” modules

These modules can be used as a mini-slide or for learning rolls and also help teach children to climb and manage their fear of height.

REF.	DIMENSIONS (LxWxH)	WEIGHT (kg)	COLOURS	HANDLES
0287	99 x 56 x 45/20 cm	5	PINK and BLUE	-
0363	150 x 60 x 60/20 cm	12	YELLOW and BLUE	-



Small foam modules

An original shape allowing a variety of assembly options: a rocker, a zigzag circuit, a wheel, a tunnel, a bridge, etc.

Hook-and-loop strips can also be used to connect 2 components to create a wheel (only for Ref. 0298 and 0331).

Ref. 0298 Giant bridge module

Dimensions: 160 x 50 x 80 cm (LxWxH).

Weight: 11 kg.



Ref. 0306 Vario' bridge module

Dimensions:

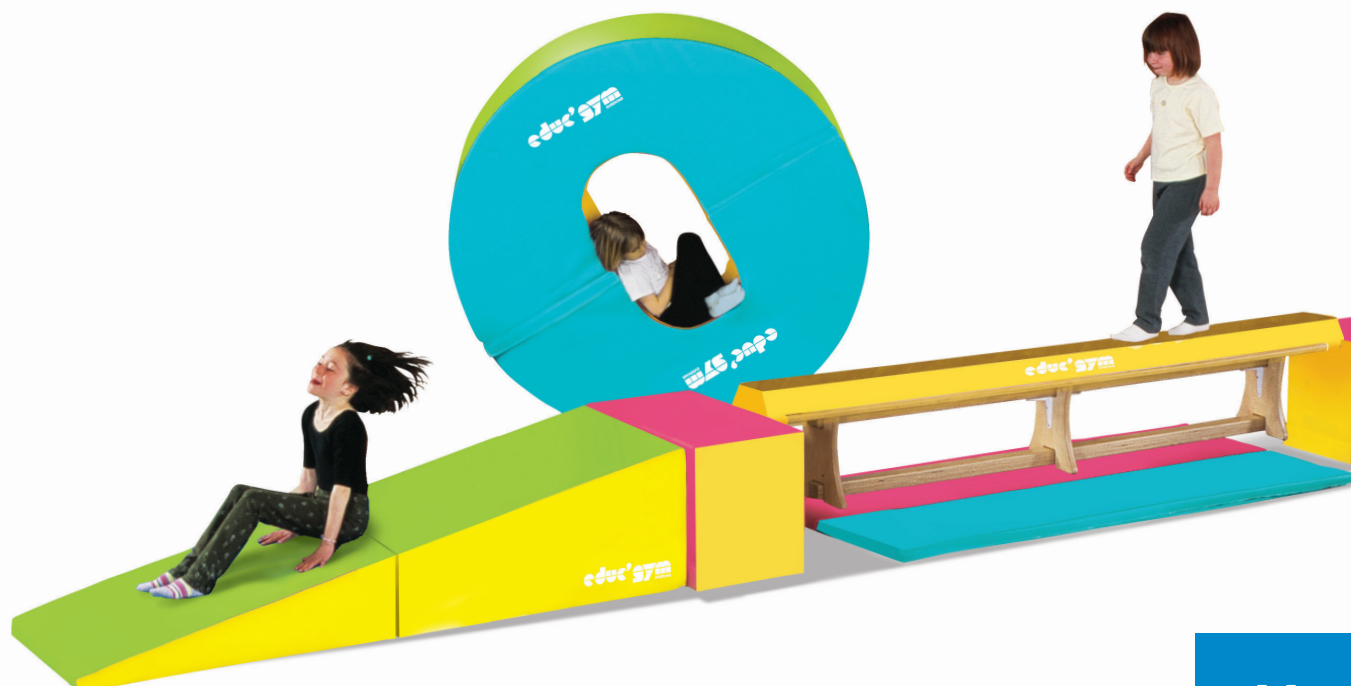
- Bridge: 150 x 60 x 75 cm (LxWxH).
- Half-moon: 60 x 60 x 30 cm (LxWxH).

Weight: 16 kg.

Ref. 0331 Small Vario' bridge module

Dimensions: 120 x 30 x 60 cm (LxWxH).

Weight: 5 kg.





Ref. 0336 Vario' tubes

Set of 3 nesting teaching tunnels to be crossed over or passed through:

- **Large module:** 100 x 90 cm (ØxL).
- **Medium module:** 80 x 90 cm (ØxL).
- **Small module:** 60 x 90 cm (ØxL).



Ref. 0370 Dome module

This dome-shaped teaching module is excellent for allowing young children to experience their very first sensations of balance thanks to its rounded, sloping design. For older children, the module can be turned over to create a rocker. 2 Carrying handles.

Colour: multi-colour.

Dimensions: 46 x 150 cm (HxØ). **Weight:** 18 kg.



Ref. 0371 Tunnel

As part of a learning sequence, it encourages development of motor skills and coordination. From overcoming obstacles to learning to roll or crawl... this teaching aid is ideal for a wide range of play activities.

Colour: multi-colour.

Dimensions: 97 x 85/45 cm (LxØ). **Weight:** 12 kg.

Small foam modules



Ref. 0364



Ref. 0368



Ref. 0294

Hexagon modules

These modules are more stable than cylinders and can be used to develop balance and alleviate fear of height. They are ideal for obstacle courses and forward rolls.

REF.	DIMENSIONS (LxWxH)	WEIGHT (kg)	COLOURS	HANDLES
0294	100 x 48 x 42 cm	5	PINK and GREEN	-
0364	150 x 60 x 26 cm	7	GREEN and YELLOW	-
0368	80 x 38 x 33 cm	3	PINK and YELLOW	-



Ref. 0280

Trapezium module

The platform allows children to experience new sensations and helps them adjust to height.

Colours: pink and yellow.

Dimensions: 120 x 67/15 x 49 cm (LxWxH). **Weight:** 6 kg.



Ref. 0281

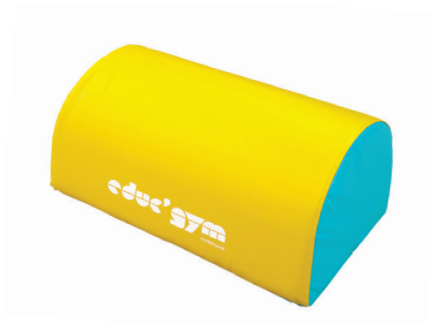
Half-cylinder

Ideal for first jumps due to its rounded shape.

Colours: blue and yellow.

Dimensions: 70 x 39 x 37 cm (LxWxH).

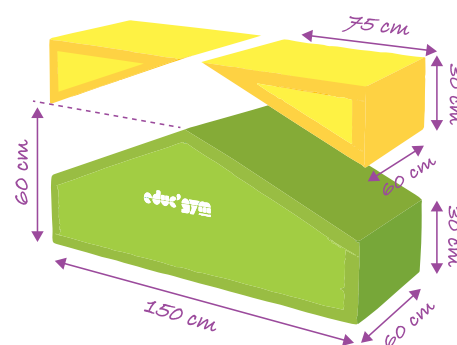
Weight: 2 kg.



Vario Range



This range is specifically designed to develop young children's motor skills. Variable-geometry modules linked by hook-and-loop strips open up infinite options for learning circuits: with adventure, discovery or even agility courses. All modules in the Vario range are made from a 25 kg/m³ high-density foam in a phthalate-free 1,000 denier PVC cover with class M2 fire rating.



Ref. 0305 Vario' block

Variable-geometry block to create: a plinth, a raised wedge, a wedge, a roof, a hexagonal rocking bridge, etc. Depending on the positioning of its modules, it can be used for an introduction to forward and backward rolls and to explore sensations of balance in either a standing or lying position. It also makes a great slide!

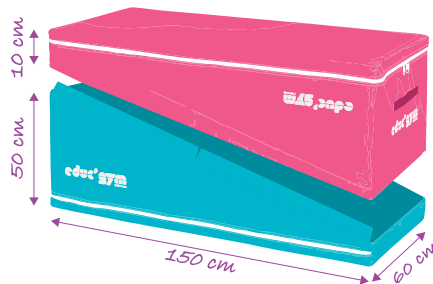
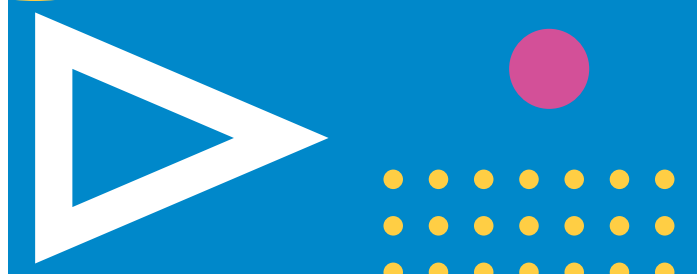
Dimensions: 150 x 60 x 60 cm (LxWxH).

Comprises:

- 2 wedges: 75 x 60 x 30 cm (LxWxH).
- 1 plinth with raised wedges: 150x60x60/30 cm (LxWxH).



Vario Range



Ref. 0303 Vario' plinth

Its modular design makes the Vario' plinth ideal for your learning circuits. Whether for learning rolls or balances, arranged in different formations, the two wedges provide an ideal foundation for different gymnastic exercises. With carrying handles and secured by removable hook-and-loop strips.

Dimensions: 150 x 60 x 60 cm (LxWxH).
Comprises:
2 wedges: 150 x 60 x 50/10 cm (LxWxH).



Dyna'Beam Ref. 0312,
see page 17.

Vario Range

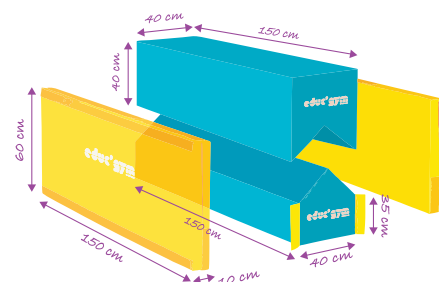


Ref. 0304 Vario' tunnel

An ideal introduction to assault courses! A tunnel in four sections that can be assembled in different configurations. Made up of 2 concave and convex modules in high-density foam and 2 side walls in high-elasticity foam.

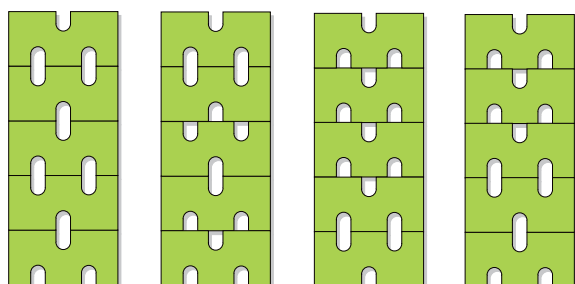
Dimensions:

- **1 concave module:** 150 x 40 x 40 cm (LxWxH).
- **1 convex module:** 150 x 40 x 35 cm (LxWxH).
- **2 side walls:** 150 x 10 x 60 cm (LxWxH).



Ref. 0319 Holds

The holds can be fitted on the 60 cm wide modules in the Vario range (Vario'Plinth - Vario'Block - Vario'Tunnel) to create a diverse range of circuits for "climbing" activities. Set of 5.



Change the position of the holds to adjust the difficulty!

Foam modules



Ref. 0299

Half-moon module

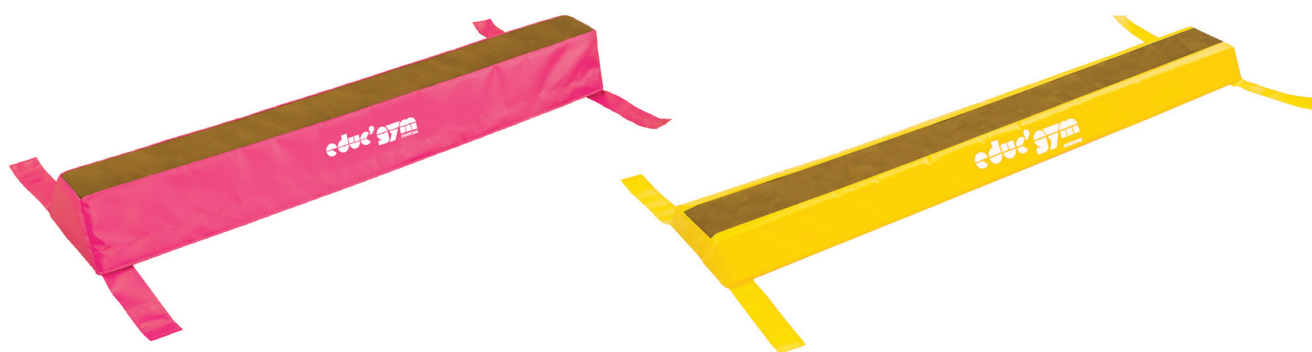
This module is ideal for introducing forward and backward rolls in baby gym sessions. The hook-and-loop strips can be positioned to create a wide variety of configurations and learning situations.

Consisting of two modules:

- **Large module:** 73 x 50 x 50 cm (LxWxH).
- **Small module:** 27 x 50 x 44.5 cm (LxWxH).

Learning beams

Ideal for an introduction to gymnastics, low beams make it possible to work on floor-height components and help to alleviate anxiety.



Ref. 0312

Dyna'Beam

The top of this light and dynamic mini-beam is identical to the covering of the beam body. It has a non-slip base and hook-and-loop strips. Compatible with the Vario range.

Dimensions: 150 x 25/10 x 15 cm (LxWxH).

Ref. 0335

Maxi Dyna'Beam

Its dimensions and a very dense grade of foam make this mini beam particularly stable. Hook-and-loop strips can be used to combine it with other components in baby gym circuits.

Dimensions: 150 x 24/15 x 8 cm (LxWxH).



To learn how to gradually overcome obstacles without fear. The components' modular design makes it possible to create different kinds of obstacles. The modules can be separated and used individually.

High-density foam, non-slip base, carrying handles.

Ref. 0301 Vario' Horse

Consisting of the following components:

Base: 150 x 80/50 x 70 cm (LxWxH).

Intermediate modules:

A 120 x 50 x 20 cm (LxWxH).

B 90 x 50 x 20 cm (LxWxH).

C 60 x 50 x 20 cm (LxWxH).

D 30 x 50 x 20 cm (LxWxH).

Rounded module: 150 x 50 x 30 cm (LxWxH).

Overall dimensions: 150 x 80/50 x 140 cm (LxWxH).



These two modules (Ref. 0278 and 0279) can be combined to create a horse for learning basic vaulting movements (bunny hop, handspring, etc.).

Ref. 0278 Low half-cylinder module

Dimensions: 90 x 40 x 20 cm (LxWxH).



Ref. 0278



Ref. 0279

Ref. 0279 Short trapezium module

Dimensions: 90 x 60/40 x 60 cm (LxWxH).



Ref. 0278 + 0279

Vaulting horses

Ref. 0261

Large trapezium foam module

Foam plinth consisting of 4 components for a safe introduction to gymnastics or further learning. It also allows spotting and access to apparatus. Each component consists of a dual-density foam with a hard section on top for stability. Equipped with carrying handles and a non-slip base.

Various possible heights: 30, 60, 90 and 120 cm.

Height of each module: 30 cm.

Overall dimensions: 120 x 90/40 x 120 cm (LxWxH).

Dimensions of the individual modules:

- A 120 x 52.50/40 x 30 cm (LxWxH).
- B 120 x 65/52.50 x 30 cm (LxWxH).
- C 120 x 77.50/65 x 30 cm (LxWxH).
- D 120 x 90/77.50 x 30 cm (LxWxH).



Ref. 0275

Large foam vaulting horse

Made up of 4 components:

- **Base module:**
Dimensions: 160 x 100/58 x 85 cm (LxWxH).
- **Intermediate modules (2 units):**
Dimensions: 160 x 58 x 12 cm (LxWxH).
- **Rounded upper module:**
Dimensions: 160 x 58 x 20 cm (LxWxH).

Various possible heights:

85, 97, 105, 109, 117, 129 cm.

Overall dimensions:

160 x 100/58 x 129 cm (LxWxH).



Large foam modules



Large, firm and stable foam modules suitable for children from 6 to 12 years of age. Made from polyurethane foam (density 21 kg/m³), in a phthalate-free 1,000 denier "leather-look" PVC cover with class M2 fire rating and carrying handles. These large foam modules can be used to create a wide range of situations to help develop young children's psychomotor skills.



Ref. 0262
Large hexagonal module

Dimensions: 160 x 66 x 57 cm (LxWxH). **Weight:** 10 kg.



Ref. 0267
Large rectangular block module

Dimensions: 160 x 58 x 100 cm (LxWxH). **Weight:** 26 kg.

Ref. 0268
Large cylinder module

Dimensions: 100 x 69 cm (LxØ). **Weight:** 8 kg.
With 2 hook-and-loop strips over the width.



Ref. 0269
Large wedge module

Dimensions: 160 x 100 x 58/4 cm (LxWxH).
Weight: 15 kg.

Ref. 0270
Large raised wedge module

Dimensions: 160 x 66 x 65/24 cm (LxWxH).
Weight: 15 kg.



Large foam modules



Composition of the assembly shown:

REF.	DESCRIPTION	QUANTITY
0262	LARGE HEXAGONAL MODULE	1
0267	LARGE RECTANGULAR BLOCK MODULE	1
0269	LARGE WEDGE MODULE	1
0270	LARGE RAISED WEDGE MODULE	1

Examples of circuits using large foam modules



Composition of the assembly shown:

REF.	DESCRIPTION	QUANTITY
0268	LARGE CYLINDER MODULE	2
0269	LARGE WEDGE MODULE	1
0270	LARGE RAISED WEDGE MODULE	1



Composition of the assembly shown:

REF.	DESCRIPTION	QUANTITY
0262	LARGE HEXAGONAL MODULE	1
0267	LARGE RECTANGULAR BLOCK MODULE	1
0268	LARGE CYLINDER MODULE	2
0270	LARGE RAISED WEDGE MODULE	1
0312	DYNA' BEAM (see page 17)	2
2150	HIGH-ELASTICITY SPRINGBOARD	1

Adapted gymnastics



A range of foam modules designed specifically for people with disabilities to make gymnastics accessible to everyone.

This set of foam modules can be used to create a wide range of situations to help develop the psychomotor skills of children or adults with disabilities. Their modular design makes it possible to create diverse play activities and they can also be used in combination with the Educ'Gym range in teaching courses.

These modules help to compensate for a wide range of disabilities. They develop self-control, often with a positive impact on an individual's approach to the many obstacles in daily life. The components' modular design makes it possible to create various play activities while promoting coordination and a sense of balance.

The foams are selected to allow users to practise gymnastics in complete safety. The Handi wedge and Handi support modules are made from high-density foam for greater support and the Handi cylinder and Handi steps modules are made from polyester foam for a lighter weight. The foam dimensions and grades have been specifically selected to suit both children and adults. Cover made from phthalate-free 1,000 denier PVC with class M2 fire rating. Non-slip base.



Balancing work



Access to apparatus



Easier forward roll (space for the head) due to the opening in the Handi wedge Ref.0342

Disability sports sessions must be conducted under the supervision of specialist instructors.

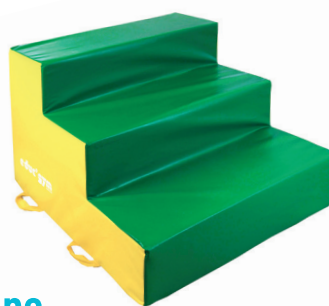
Adapted gymnastics



Ref. 0340 Handi cylinder

This large cylinder is ideal for a fun introduction to gymnastics exercises: overcoming obstacles, forward and backward rolls (depending on disabilities). In combination with Handi Supports, it can be converted into a bridge. Equipped with 2 carrying handles.

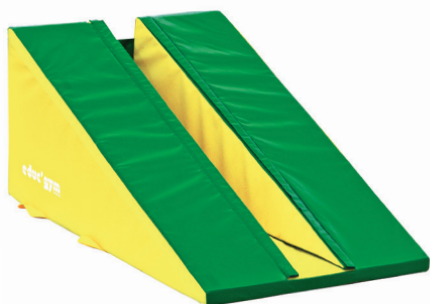
Dimensions: 200 x 70 cm (LxØ).



Ref. 0341 Handi steps

These very stable steps allow easier access for people with disabilities to apparatus in learning workshops. Users can reproduce the actions of going up and down steps and work on free jumps in complete safety. Equipped with 4 carrying handles.

Dimensions: 114 x 100 x 72 cm (LxWxH).



Ref. 0342 Handi wedge

This wedge has been designed to allow supervisors to adapt it according to users' disabilities. Its central opening supports rolling exercises and allows users to manage descents in complete safety. The head position remains correct during the exercise and it provides better shoulder support during forward or backward rolls. This module can be used on its own or in combination with Ref. 0345 and 0344. Equipped with 4 carrying handles. **Dimensions:** 160 x 100 x 72 cm (LxWxH).

Central opening width: 30 cm.



Ref. 0343 Handi support

This module can be used on its own to learn to crawl or to overcome obstacles. In combination with the Handi-cylinder module, it can be used to work on balance. Per unit.

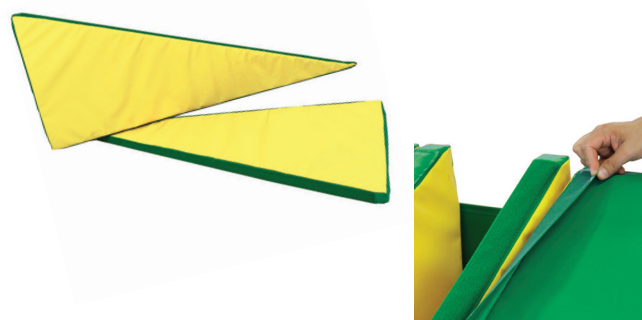
Dimensions: 50 x 100 x 50 (LxWxH).



Ref. 0344 Handi soft mat

Landing mat to make all your play areas safe. Its dimensions allow it to be positioned on the Handi wedge module Ref. 0342 to work on rolling exercises.

Dimensions: 170 x 100 x 10 cm (LxWxTh).



Ref. 0345 Support for raised wedge module

These supports allow individuals with small builds to safely perform exercises on the wedge (Ref. 0342). The central gap can be adjusted to allow more space for the head. Per unit. Useful quantity: 2. Central opening width with supports: 20 cm.

Dimensions: 160 x 5 x 66 cm (LxWxH).

Ref. 0259 Gym' kub

This U-shaped module is quick and easy to handle. It can be integrated in a Baby-Gym circuit thanks to the tunnel (through, over and under) and is also useful for everyday practice with apparatus.

Its safe and stable design allows gymnasts to practise exercises alone in complete safety by positioning the module behind a vaulting table, at the end of a beam, etc.



The components are made from high-density impact-absorbing foam fully encased in a 1,000 denier polyester cover and have 4 carrying handles.

Composition:

- Tunnel: 200 x 120 x 110 cm (LxWxH).
- Plinths: 100 x 40 x 47.5 cm (LxWxH).



Ref. 0260 Multi-shape module

This set of foam modules can be used to create situations to develop children's motor skills in the Baby-Gym (through, over, under, with round, square, rectangular and triangular shapes), as well as for everyday practice with apparatus. The positioning of the hook-and-loop strips on each of the components allows a wide range of combinations (at the end of a beam, on parallel bars for dismounts, behind the vaulting table or the push-off pad to work on second flight).

Placed under the beam, it allows users to work in

complete safety and adjust to the height of the beam.

Composition:

- 1 "U" shape module: 200 x 150 x 80 cm (LxWxH).
- 2 basic modules: 200 x 50 x 40 cm (LxWxH).
- 2 triangular modules: 100 x 50 x 40 cm (LxWxH).
- 2 rectangular block modules: 100 x 50 x 40 cm (LxWxH).





Wooden range



Ladders

Made from stained and varnished wood, the ladders are available in 4 models: large and small, straight or curved. They form an interlinking modular set and can also be combined with the entire range of bases thanks to the new linking elements (Ref. 0116). They are easy to assemble and adjust, comply with the safety requirements of the French standard NF S 54-300 (overturning and stability) and are suitable for all children from 3 to 12 years of age.

Ref. 0100 Large straight ladder

Ladder with 7 rungs.
Size: 190 x 55 cm (HxW).



Ref. 0101 Large curved ladder

Identical to Ref. 0100 but with a curved shape.
Size: 190 x 55 cm (HxW).



Ref. 0103 Small straight ladder

Ladder with 4 rungs.
Size: 111 x 55 cm (HxW).



Ref. 0104 Small curved ladder

Identical to Ref. 0103 but with a curved shape.
Size: 111 x 55 cm (HxW).



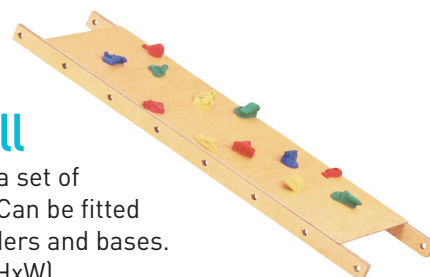
Ref. 0106 Slide

Can be fitted to the range of ladders.
Size: 162 x 55 x 108 cm (LxWxH).



Ref. 0108 Climbing wall

Wall supplied with a set of 12 climbing holds. Can be fitted to the range of ladders and bases.
Size: 190 x 55 cm (HxW).



Ref. 0109 Set of 12 holds

Made from resin and in fun shapes, these holds are attached to the climbing wall Ref. 0108.



Ref. 0114 Ladder stabiliser

This essential component provides the required stability for your assembly thanks to its anti-slip pads. It is supplied with a removable metal bar and a thumbscrew for optimum tightening. Per unit.



Ref. 0115 Side linking element

Used to connect the side of a ladder to a linear structure. Supplied with 4 thumbscrews and 4 tightening nuts. Per unit.



Ref. 0118 Assembly elements

Used to link ladders together. 4 possible angles allow a wide range of assembly options. Supplied with 8 thumbscrews and 8 tightening nuts. Pair.



Bases

Educ'Gym bases are made of wood. They are easily stackable and modules of the same level can be created by stacking one or more bases of different heights. The four sides of the bases have holes for attaching other components of the system via a simple locking or fixing method. They are suitable for teaching and play exercise. They can be combined with wooden mini-bars, learning beams and Educ'Gym benches as well as the range of ladders.

Bases

Ref. Dimensions (LxWxH)

0065 160 x 40 x 33 cm

0066 160 x 40 x 48 cm

0067 160 x 40 x 63 cm



Ref. 0065



Ref. 0066



Ref. 0067

Mini-bases

Ref. Dimensions (LxWxH)

0060 75 x 40 x 33 cm

0061 75 x 40 x 48 cm

0062 75 x 40 x 63 cm



Ref. 0060



Ref. 0061



Ref. 0062

Step bases

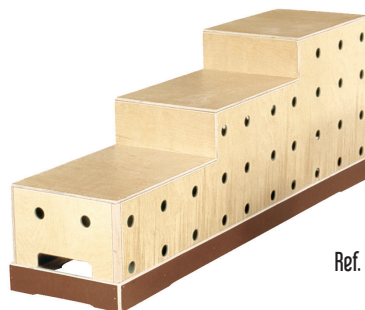
Ref. Length Heights

0064 75 cm 33 and 48 cm

0068 160 cm 33, 48 and 63 cm



Ref. 0064



Ref. 0068

Ref. 2510 Educ'Gym base

Made up of 3 x 33 cm high Educ'Gym bases (Ref. 0065) for a gradual introduction to jumping using different heights. It is supplied with a padded and removable base top, stabilisers and transport trolleys.

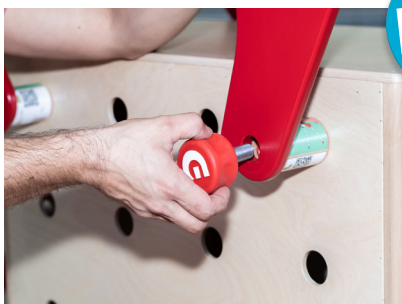
Dimensions: 160 x 40 x 100 cm (LxWxH).



Ref. 0116 Base/ladder connection kit

Create a wide range of learning circuits with this assembly kit which can be used to connect the range of ladders to the range of bases.

Per unit.



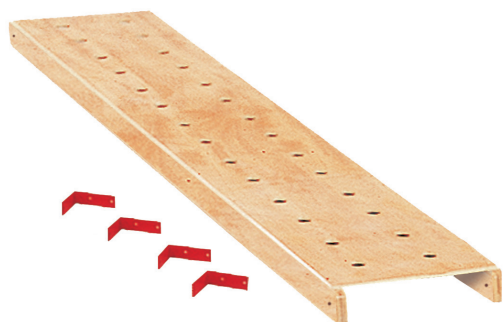
NEW!



Ref. 0045 Bench

This bench is intended for stand-alone use or to be hooked onto wall bars or bases.

Dimensions: 250 x 23 x 35 cm (LxWxH). **Weight:** 18 kg.



Ref. 0054 Supporting panel with holes

Designed to be secured against a wall, it saves on stacked bases and accommodates bars, beams and benches using holes similar to those in the bases.

Dimensions: 216 x 40 cm (HxW).



Ref. 0028 Wooden mini-bars

Can be hooked onto all bases and mini-bases using a locking system. Per unit.

Dimensions: 130 x 4 cm (LxØ).



Learning beams

These wooden beams covered in carpet are fitted with toggle hooks to allow them to be attached to Educ'Gym bases or another identical beam.

Height: 34 cm. **Width:** 12 cm.

Ref. 0041 Length: 2.50 m.

Ref. 0043 Length: 3 m.



Learning accessories



Ref. 0250 Learning roller

Placed between two EDUC'GYM bases, this allows users to work autonomously on forward and backward rolls using a back or front support.

Dimensions: 70 x 30 cm (LxØ).



Ref. 0021



Ref. 0020

Base tops

Provide additional comfort while maintaining stability.

Ref. 0020

Can be fitted on bases Ref. 0065, 0066 and 0067.

Dimensions: 160 x 40 cm (LxW).

Ref. 0021

Can be fitted on mini-bases Ref. 0060, 0061 and 0062.

Dimensions: 75 x 40 cm (LxW).



Ref. 0025

Base stabilisers

Used to stabilise stacked bases or mini-bases.

Length: 80 cm. Pair.



Ref. 0026

Transport trolleys for bases

Pair.



Example circuits



Please note that in accordance with the French standard NFS54-300, a landing zone should be provided at the base of all structures and modules over 60cm in height.

Example circuits



The Educ'Gym wooden range meets all the safety conditions of the NFS 54-300 standard. The products' design and modular construction allow an infinite number of configurations. They can be combined to create fun sequences to help develop and refine psychomotor skills.



Example circuits

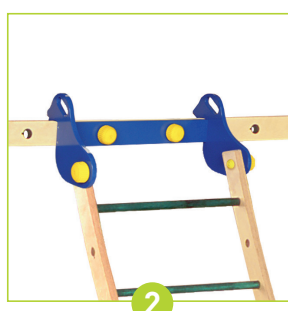


Example circuits



Joining ladders

- 1 **Linear assembly**
Using parts Ref. 0118 supported by the tightening thumbscrew + plastic nut system.
- 2 **Side assembly**
Using part Ref. 0115 (nut + thumbscrew system).
- 3 **Ladder stabilizer Ref. 0114**
Attaches directly to the ends of ladders. Assembly system with a metal bar and tightening thumbscrew.



Joining bases

- 4 **Stacking of bases, modules, etc.**
Bases are stacked using a plinth system. Modules of the same level can be created thanks to three compatible heights of 33, 48 and 63 cm. The base and mini-base tops stack in the same way as the bases.
- 5 **Stabilizers, transport trolleys Ref. 0025 & 0026**
They can be hooked onto the plinths on the short sides of the bases. Ref. 0025 increases the stability of the modules. Transport trolleys make it easier to move stacks of bases.
- 6 **Locking of mini-bars Ref. 0028**
Mini-bars can be attached to the bases in all positions thanks to their rotating stirrups, the washers of which fit into all the holes on the 4 sides, and are locked simply by manipulating the two metal levers. The bases can also be connected to the benches Ref. 0045.
- 7 **Base/ladder connection kit**
Assembly system with a metal bar and tightening thumbscrew to join bases to ladders.



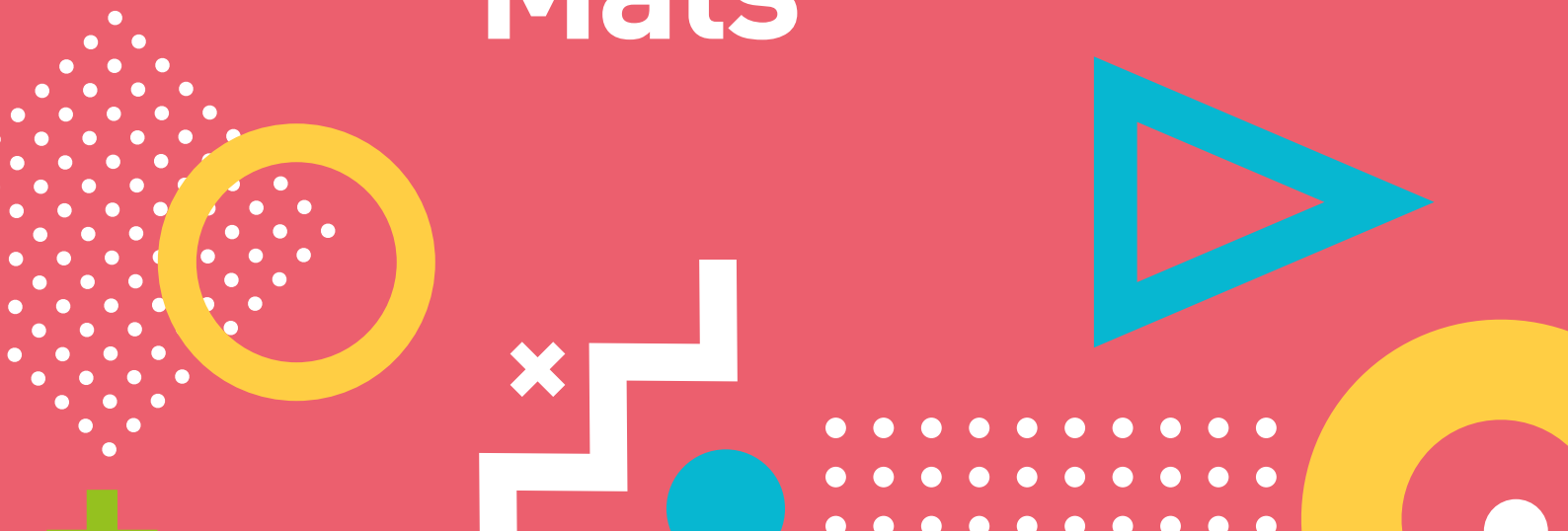
Other types of connection

- 8 **Hooking of beams Ref. 0041 and 0043**
To hook two beams together, place 2 feet facing each other, lift just one of them, push in the rocking hook and then lower. A single hook creates the connection, just lift the same foot to unhook. The same applies for hooking a beam to a base.
- 9 **Supporting panel with holes Ref. 0054**
Attaches to the wall and saves on bases.





Mats



Mats

Educ’Gym offers a range of mats designed specifically for young children to ensure safety in all your learning circuits. These mats and landing mats are encased in a phthalate-free PVC cover with M2 fire rating and are made of polyethylene foam.



Gymnastics areas

These folding gymnastics areas in 50-cm sections are easy to install and tidy away. They also represent excellent value for money when purchasing mats for schools.

These mats are created using a firm foam.

REF.	DIMENSIONS (LxWxTh.)	WEIGHT	NO. OF COLOURS
0467	200 x 150 x 4 cm	7	3
0468	200 x 200 x 4 cm	9	4
0469	300 x 200 x 4 cm	13	4



Ref. 0468



Ref. 0469

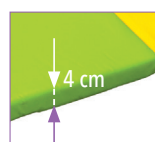
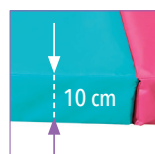
Folding mats

Fold in 2 lengthwise and with hook-and-loop strips to connect mats to each other. This makes it possible to create colourful learning areas. These mats are made from a high-comfort foam.

REF.	DIMENSIONS (LxWxTh.)	WEIGHT	COLOURS
0450	200 x 100 x 4 cm	4	GREEN and YELLOW
0451	200 x 100 x 4 cm	4	BLUE and PINK
0452	200 x 100 x 10 cm	9	GREEN and YELLOW
0453	200 x 100 x 10 cm	9	BLUE and PINK



Ref. 0453



Ref. 0450

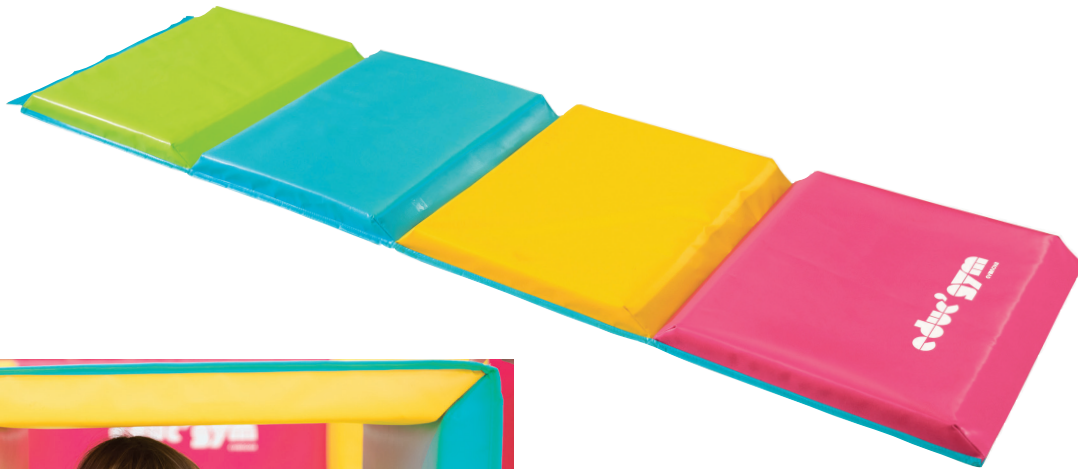
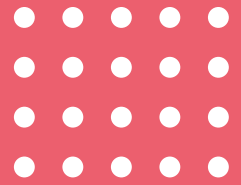


Joining of mats using hook-and-loop strips



High-comfort foam

Learning mats



Ref. 0470 Cube mat

This versatile multicolour mat is designed to ensure safety in all your play areas. When folded, it converts to a cube and becomes a valuable teaching tool that can be integrated in your Baby-Gym circuits.

Colours: multicolour.

Dimensions: 240 x 60 x 5 cm (LxWxTh). **Weight:** 4 kg.



Ref. 0466 Nursery school mat

Designed specifically for use in nursery schools, the dimensions and density of this specific mat ensure safety for very young children in psychomotor development sessions.

Dimensions: 100 x 70 x 10 cm (LxWxTh).

Weight: 2 kg.



Ref. 0454 Rainbow mat

Thanks to its multicoloured design, this mat will fit in perfectly with your fine proprioception sessions. Its size also allows it to be positioned on Educ'Gym wooden ladders.

Dimensions: 120 x 60 x 7 cm (LxWxTh).

Weight: 2 kg.

Designed by an architect with a passion for her work and manufactured by the Educ’Gym brand, this mat inspired by its paper version but made life-size, is perfect for developing young children’s motor skills.

“Basic space” hut mat

This mat encourages children to discover architecture for themselves by creating their own 3D spaces (house, hut, etc.). Much more than just a mat, this product is very much a life-size model for exploring the virtually endless possibilities of architecture.

It folds neatly into a compact cube but also stimulates children’s imagination. It is also ideal for setting up motor skills sessions for young children. When folded into an L-shape, the mat also provides a sense of security for very young children when learning to walk, run or jump.

Two hut mats can be combined to create a rectangular mini gymnastics area for use by groups of young children.

Technical specifications:

- Modular mat made up of several square sections each measuring 65 x 65 cm
- Thickness: 40 mm
- Cover in phthalate-free 1,000 denier PVC with class M2 fire rating
- Transport bag with carrying handle
- Available colours: ● ● ● ●

Ref. 9510

9-section hut mat

Dimensions: 340 x 340 cm.

Ref. 9511

6-section hut mat

Dimensions: 272 x 203 cm.

Ref. 9512

Set of 3 sections

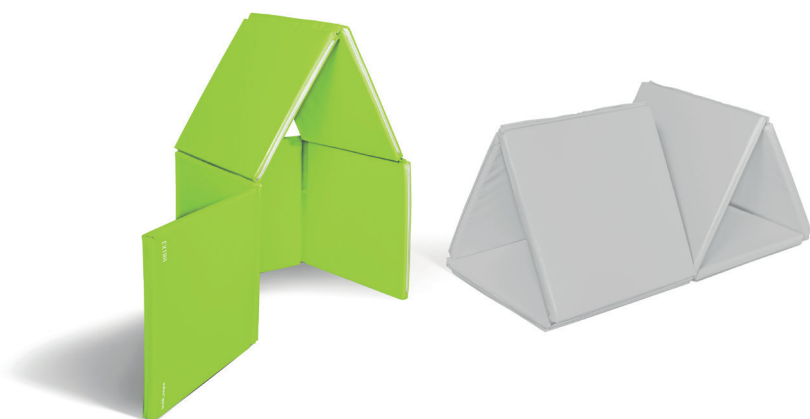
Size of each section: 65 x 65 cm.



Ref. 9510



Ref. 9510



Ref. 9511

Small learning equipment



This foam rectangular block can be combined with hoops and sticks to create endless opportunities for motor and sensory play for young children.

Actiplot

Featuring a compact design and allowing a wide variety of uses, it offers endless exercises and games for children of all ages. Its technical specifications further increase its fun and exploratory features: foam design, lightweight, durable, quiet, easy to handle and construct. The actiplot has a hole in the centre with grooves in different directions on the top and bottom to allow unlimited changes of direction, more stable construction if necessary and to create an even more diverse range of real and imaginary objects.

Ref. 0425

Actiplot kit

15actiplots,12hoops,20x70cmsticks,6x1.20msticks,50balls.

Ref. 0426

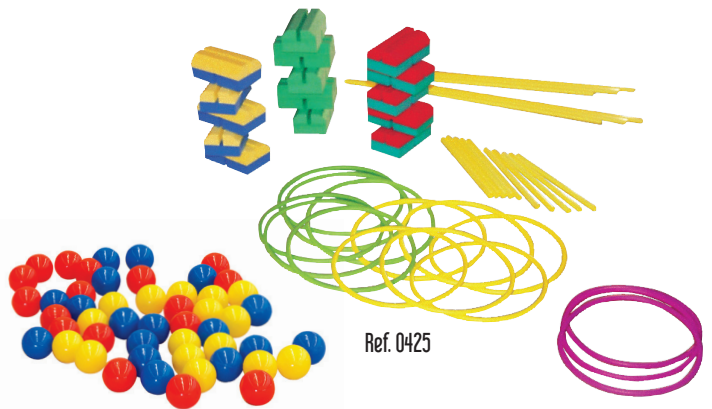
Set of 15 Actiplots only

Ref. 0441

Baby basket

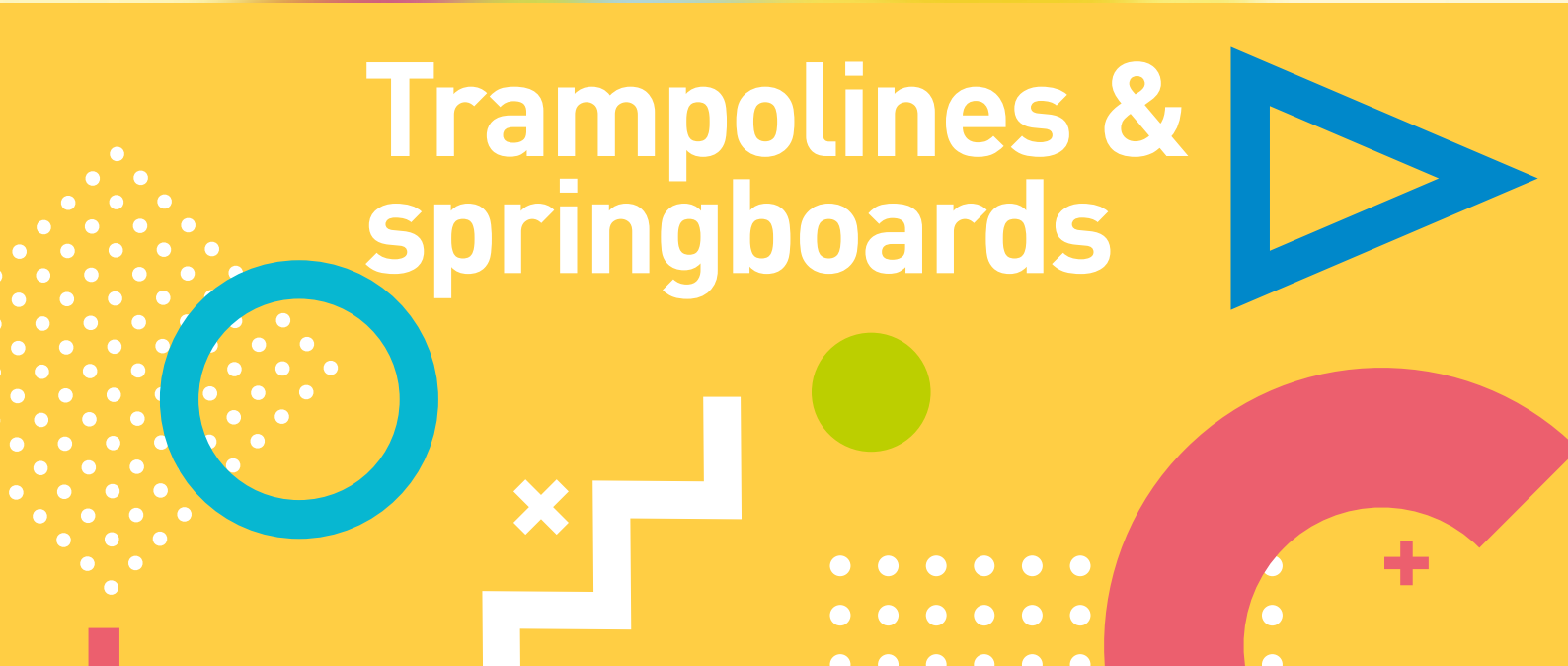
What child has not dreamed of being a basketball player? The Baby basket makes this dream come true. Its adjustable height, from 1 m to 2.40 m, allows even very young children to experience the thrill of shooting the ball into the basket! And its ballast base allows older children to develop their expertise like stars. Can be combined with Baby-Gym circuits to make exercise routines fun.

Entirely in plastic. Sold without accessories.



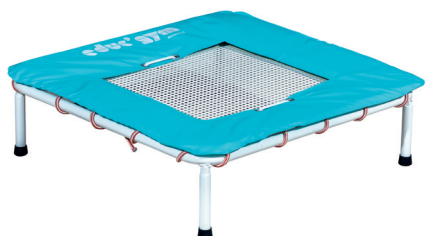


Trampolines & springboards



Trampolines & springboards

These baby trampolines support rebound and push-offs in complete safety. They meet the needs of children from the age of 12 months by improving motor coordination and balance. Supplied with protective padding.



Ref. 0010 Baby-trampoline

Ideal for an introduction to single jumps.

Total size including protective padding:

77 x 77 x 20 cm (LxWxH).

Frame: 73 x 73 cm.

Bed: 53 x 53 cm.



Ref. 0013 Triple baby-trampoline

Its fun design is ideal for single jumps or sequences.

Total size including protective padding:

220 x 90 x 20 cm (LxWxH).

Frame: 210 x 80 cm.

Bed: 183 x 53 cm.



Ref. 2121



Ref. 2122

These lightweight and stable items are made from firm foam with a 1,000 denier phthalate-free PVC cover with class M2 fire rating. They are ideal for an introduction to the apparatus and for first jumps in the baby-gym.

Ref. 2121 Foam springboard

Colours: turquoise and yellow.

Dimensions: 80 x 50 x 20 cm (LxWxH).

Weight: 4 kg.

Ref. 2122 Large foam springboard

Colours: lime green and yellow.

Dimensions: 120 x 50 x 25 cm (LxWxH).

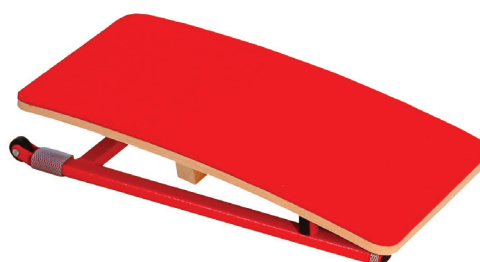
Weight: 5 kg.

Ref. 0018 Mini-springboard

Designed specifically for children from 3 to 8 years of age.

Equipped with transport wheels.

Dimensions: 79 x 40 x 14 cm (LxWxH). **Weight:** 9 kg.





A		
Actiplot	39	
Adapted gymnastics	22, 23	
B		
Baby basket	39	
Bases	27	
Beams	8, 17	
Bench	28	
Bridge	11	
C		
Cylinders	8, 20, 23	
Climbing wall	26	
F		
Folding wedges	6	
Foam module	5	
Folding mats	36	
Half-moon	17	
G		
Gymnastics areas	36	
H		
Hexagons	13, 20	
Holds	16, 26	
L		
Ladders	26	
Learning mats	37, 38	
M		
Mats	36, 37	
R		
Raised wedges	10, 20	
Rectangular blocks	10, 20	

Index



S	
Slide	26
Springboards	41
Steps	7, 23, 27
T	
Trampolines	41
Trapeziums	13/18
Tunnel	12, 16, 24
V	
Vaulting horses	18, 19
W	
Wedges	6, 15, 20, 23
Wooden plinths	27
Wooden mini-bars	28

You can find our **General Terms and Conditions of Sale** and all **assembly instructions** on our website: www.gymnova.com

The photos in this catalogue are non-contractual and for illustration purposes only.

Photo credit: Franck Faipot, GYMNOVA, Espace Montaigne, AdobeStock
Diagrams: Gymneo, GYMNOVA
Design and layout: Zen studio Marseille
Edition: December 2021



educ' gym
GYMNOVA

GYMNOVA

45 rue Gaston de Flotte - CS 30056
13375 Marseille Cedex 12 - France
Tel.: +33 4 91 87 51 20 - Fax: +33 4 91 93 86 89
export@gymnova.com - www.gymnova.com